

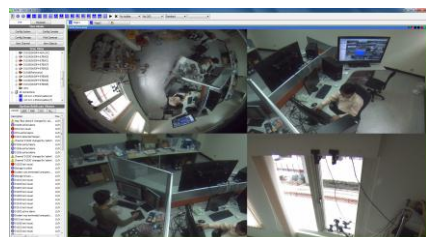
DM365

5MP 360° Panorama PoE Camera + NVR Standalone



Key Features

- 5 megapixel CMOS sensor with Power-over-Ethernet (PoE).
- 360° Panorama functions during live and playback.
- Panoramic 1/4/5 split views with combination of panoramic/rectilinear/cylindrical views
- Automatic disaster recovery of video data.
- Instant playback up to 512x times with video search function.
- Multi-core support suitable for performance demanding tasks.
- Full remote control through Internet Explorer.
- Multi-layer central management architecture.
- Online system configuration change.
- Graphical activity diagram display in real-time.



Specification

Image Sensor	1/2.5" CMOS, 5.0 Mega pixels
Lens	1.05 mm 180° Fish-eye lens
Video Out	1 Analog video out (BNC connector) Triple Codec (H.264, MPEG4, MJPEG) Support Simultaneous multiple streams
Image Setting	AGC, AWB, AES, BLC
Maintenance	Supports online firmware upgrade
Water Proof	IP66 standard
Power Supply	PoE Injector or Power Adaptor: DC12V, AC24V,
Compression Format	H.264 / 8fps at 2592x1920 MPEG4 / 8fps at 2592x1920 MJPEG / 8fps at 2592x1920
Dimensions	Φ 145 x H:108.2 mm
Weight	About 892g
Operating	Temperature: 0~45°C



* Specifications are subject to change without notice.

Video Management Software Features

Display

Display mode	1, 2, 1+3, 1+4, 1+5, 1+7, 1+9, 1+11, 1+12, 1+15, 2x2, 3x3, 4x4, 5x5, 8x8, 16x16 maximum 256 views
Digital PTZ	Digital pan-tilt zoom during live and playback. Support mouse wheel.
Instant playback	Switch to playback mode from live.
OSD	On Screen Display of meta-data information, including: timestamp, bps, Fps, playing state, recording status.
Tour	Sequence tour.
Multiple monitors	Maximum 6 monitors.

Recording and Playback

Speed	1/2/4/8/16/32/64/128/256/512x and slow motion speed control.
Frame-reduced recording	Record at a significantly low frame-rate when there is no event to extend storage usage.
Synchronized playback	25-channel synchronized playback at the same time. Also supported in remote console.
Graphical time-bar	Graphically displays video data/event/storage size/activity on time-bar.
Motion detection	Support both hardware and software-based motion detection.

Event and Trigger

Flexible policy engine	Allow any logic combination (AND/OR) of conditions to trigger predefined actions.
Trigger conditions	Trigger conditions include: system start, configuration change, video loss, DI/DO change, recording changed, alarm, and motion.
Event log	Triggered event will be recorded into an event log.
E-mail with split-view	Email notification with snapshot aggregating multiple channels in a split-view image.

Export Function

Export to AVI	Export video clips to AVI format
Export footage	Export multiple channels into single file.

Security

Multi-level permission	Unlimited levels of permission to set group according to required functions
User right control	Account/password defined with associated permission control
Digital watermarking	Protect and detect video data against digital tampering.

eMap

eMapmanager	Intuitively navigating (pan-tilt-zoom) to cameras. Edits map and choose arbitrary location and angle of a camera icon which reflects the camera situation in real-time.
Google map	Integrate with Google map.
eMapcontrol and monitor	Control DI/DO, monitor and manage device status, and process alarm directly on eMap.

Remote and Mobile Functions

3GPP mobile device	Live video streaming to 3GPP mobile device.
Remote client application	Perform live viewing, playback, and all other features through remote client application.
Internet Explorer	Perform all features through remote Internet Explorer.

Central Management

Multi-site management	Connect to multiple servers to perform all kinds of remote tasks.
Live and playback	Allow live viewing and playback search on all managed servers.
Integrated security	Automatically synchronize all user credentials and permissions among managed servers.
Multi-layered structure	Allow multiple-layer of management servers to increase manageability and flexibility.
Remote control	Remotely control the central server with full functions.

PTZ Control

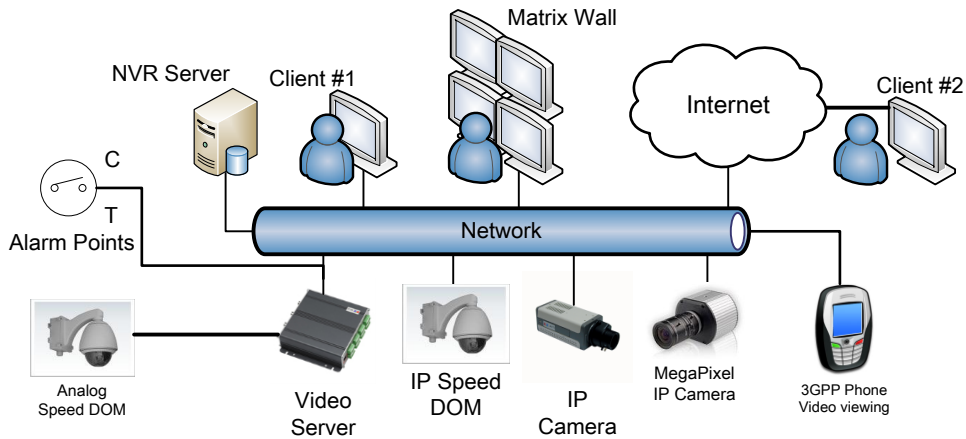
Mouse PTZ	On-screen pan-tilt-zoom with mouse and wheel operation.
-----------	---

360° Panorama

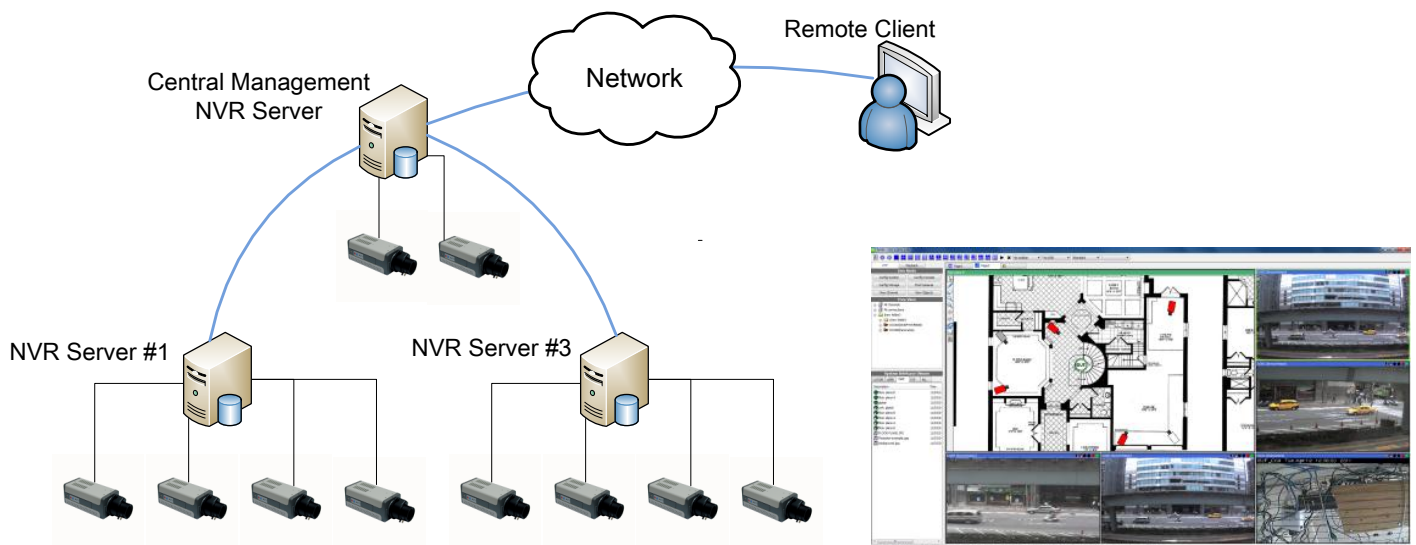
Panorama view	1/4/5 split views with combination of panoramic/rectilinear/cylindrical views
Panoramic digital PTZ	Panorama digital pan-tilt-zoom during live and playback.

* Specifications are subject to change without notice.

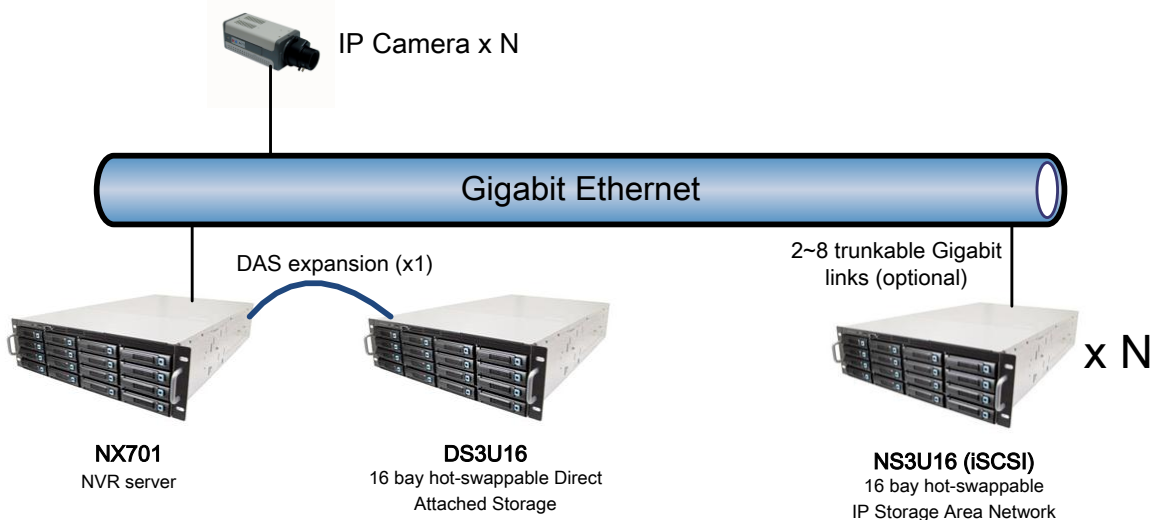
Solution Architecture Overview



Central Management System – Multi-layered Architecture



Storage Extensibility



TEL: 886-2-89670534 David Hsieh
 Mail: d0488d@hotmail.com david@longstor.com